

Historic Jupiter-Indiantown Trail

Connecting *NENA Places*

What Is NENA?

- The Northeast Everglades Natural Area (NENA) is a collection of conservation lands (165,000 acres) as well as activity and education centers lying in northern Palm Beach County and southern Martin County.
- NENA provides residents and visitors with a wide range of nature-based outdoor recreational opportunities.

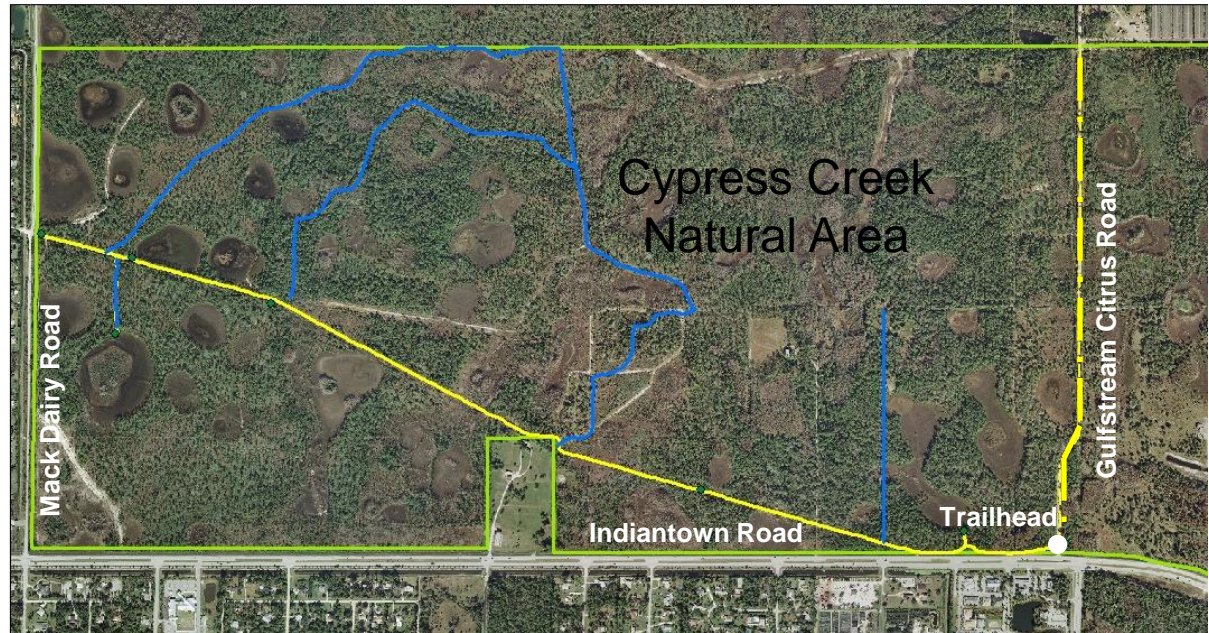
Historic Jupiter-Indiantown Trail

- 16.5-mile multiuse trail.
- Located between Riverbend Park in Jupiter and the St. Lucie Canal in Indiantown.

Project Benefits

- Restores an old connection between Jupiter in Palm Beach County and Indiantown in Martin County.
- Offers backcountry multi-user access to three conservation lands and visitor facilities: Riverbend Park, Cypress Creek Natural Area, and Jones Hungryland Wildlife and Environmental Area.
- Preserves historic route for future interpretive trail rides.

Trail Map



- Historic Jupiter Indiantown Trail (multiuse)
- Hiking Trail (pedestrian only)
- Jessup Trail (multiuse)
- Natural Areas Boundary

Project Overview

- Historic Jupiter-Indiantown Trail is being built in phases along an old road used from the turn of the century to the late 1950s for travel between Jupiter and Indiantown. It will be open to travel by foot, bicycle, and horseback.
- Each of the conservation lands accessed by this trail is subject to its own rules of use:
 - Riverbend Park
www.pbcgov.com/parks/locations/riverbend.htm
 - Hungryland Wildlife & Environmental Area
www.myfwc.com/viewing/recreation/wmas/lead/jones-hungryland/
 - Cypress Creek Natural Area
www.pbcgov.com/erm/natural/natural-areas/cypress-creek/
- Construction of the trail from Cypress Creek Natural Area to Riverbend Park is anticipated to begin in Fall 2013.

Trail Features Now Open

- 2 miles through Cypress Creek
 - ✓ Trailhead/off-street parking at Indiantown Rd., chickee shade shelter, information board, & equestrian pitcher pump well.
 - ✓ Elevated, fully accessible trail surface.
 - ✓ Way-finding signage and shade shelters.
 - ✓ Bike racks, horse hitches and mounting blocks at access points to hiking trails and wildlife observation platforms.
- 5 miles through Hungryland WEA
 - ✓ Trailheads/off-street parking at Gates 3 & 9.
 - ✓ Mostly elevated, packed dirt and grass trail surface, subject to seasonal flooding and areas of exposed roots and loose gravel.
 - ✓ Trailhead/information kiosk at SR 711. (Gate 9)

Project Partners

Palm Beach County, Florida Fish and Wildlife Conservation Commission, Martin County, Florida Department of Transportation through the Florida Stimulus Scenic Enhancement Fund



Palm Beach County Board of County Commissioners
 Department of Environmental Resources Management
 2300 North Jog Road - Fourth Floor, West Palm Beach, FL 33411
 Phone: 561-233-2400 <http://www.co.palm-beach.fl.us/erm/>