



# Cypress Creek Natural Area Hydrologic Restoration Projects



## Natural Areas Program

- Over 31,000 acres of County-owned and/or managed lands protected to maintain the diversity of biological communities and species.
- Open from sunrise to sunset, 7 days/week, including holidays.
- Available for passive, natural resource-based recreation activities such as hiking, bird watching, nature study, and photography, as well as for environmental education and scientific research.
- Other recreation uses, such as horseback riding, bicycling, and fishing, are permitted in designated areas on a site-specific basis.

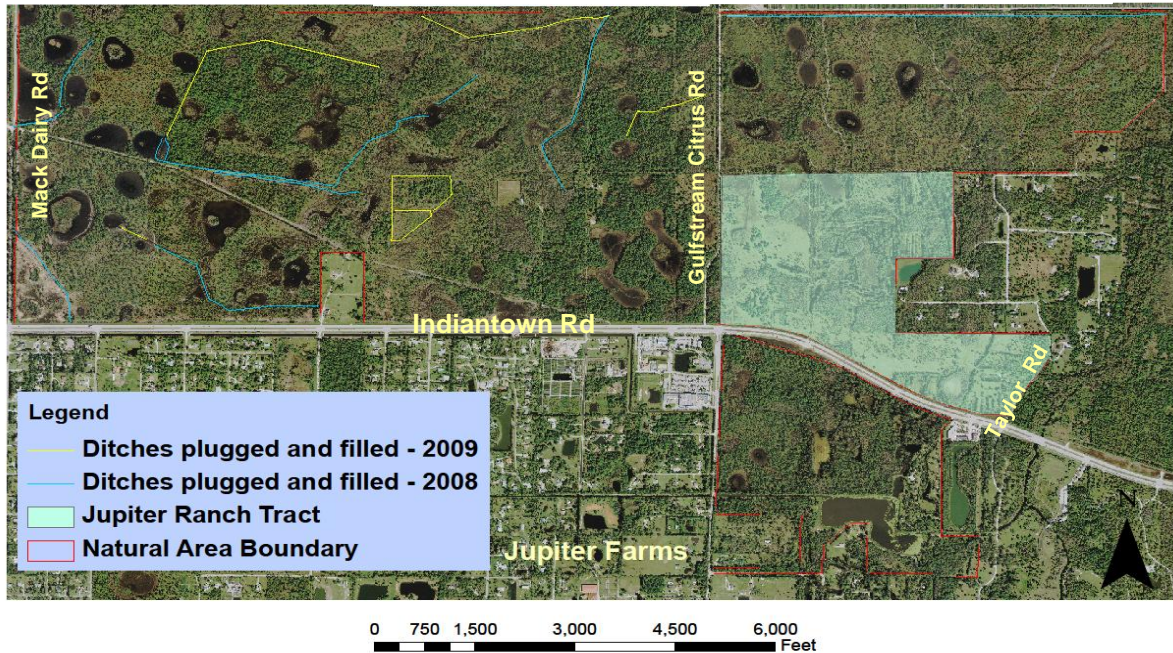
## Project Location

- Between Mack Dairy Rd and Taylor Rd., north of Indiantown Rd.
- The natural area is part of NENA (Northeast Everglades Natural Area), a collection of 165,000 acres of conservation lands, activity, and education centers in Palm Beach and Martin Counties that offer nature-based outdoor recreational opportunities.

## Plants and Animals

- Site contains 7 native ecosystems: mesic & wet flatwoods, hydric hammock, depression marsh, wet prairie, dome swamp & blackwater stream.
- Listed plants observed: butterfly orchid, Catesby lily, royal fern, blue-flowered butterwort, snowy orchid, lace-lip ladies' tresses, common & giant wild pines.
- Listed animals observed: Bachman's sparrow, American alligator, snowy egret, yellow-crowned night-heron, swallow-tailed kite, bald eagle, wood stork, American redstart, Florida pine snake, gopher tortoise & round-tailed muskrat.

## Project Aerial View



## Project Overview

- Development, mining, and agriculture have impacted this 2083-acre natural area since the 1920s, including the historic Rood Settlement and construction of Old Indiantown Road.
- Drainage ditches constructed in the 1950s altered the site's hydrology, which is an important component of the Loxahatchee River watershed.
- Restoration is focused on removing invasive nonnative vegetation and restoring hydrology to historic wetland levels.
- Through 2011, restoration activities have included:
  - Removal/treatment of over 1,850 acres of invasive nonnative vegetation, including 1.5 miles of the Old Indiantown Road grade.
  - Removal of a cattle-dipping vat used in the 1900s to treat livestock for ticks.
  - Backfilling/plugging of 6 miles of ditches and cleaned 3 culverts to enhance natural surface water flow.
- In March 2010, restoration of the 251-acre Jupiter Ranch Tract, east of Gulfstream Citrus Road, was initiated.
- In November 2011, improvements to the Old Indiantown Rd grade and public use facilities along NENA's [Historic Jupiter Indiantown Trail](#) were completed.
- Restoration activities through 2012 will include:
  - Continued treatment of invasive nonnative vegetation.
  - Restoration of old shell mining pits to wetland elevation and planting native vegetation on the Jupiter Ranch Tract.



## Project Partners

Palm Beach County, Florida Department of Environmental Protection, Loxahatchee River Preservation Initiative



Palm Beach County Board of County Commissioners  
Department of Environmental Resources Management  
2300 North Jog Road - Fourth Floor, West Palm Beach, FL 33411  
Phone: 561-233-2400 <http://www.co.palm-beach.fl.us/erm/>